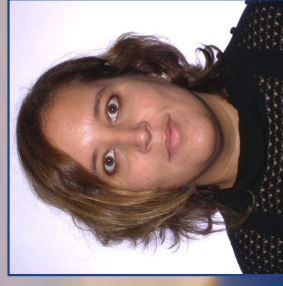


environmental research seminar



LIFESTAGE ENVIRONMENTAL EXPOSURES AND DISEASE CENTER
UNIVERSITY OF MICHIGAN

Air pollution exposure in air pollution epidemiological studies: modeling approaches & challenges



Veronica Berrocal, PhD
Associate Professor of Biostatistics, U-M SPH

March 21, 2017
12:00 pm
3755 SPH I

Abstract:

A typical problem in air pollution epidemiological studies concerns environmental exposure assessment. In this talk, we will discuss challenges to air pollution exposure assessment, and will showcase methods that have been developed to obtain estimates of ambient air pollution. Further, we will illustrate how uncertainty in both ambient and personal exposure can be incorporated in a health analysis using as case study birth outcomes in North Carolina.

**Sponsored by the Integrated Health Sciences
Core of the Michigan Center on Lifestage
Environmental Exposures and Disease (M-LEEaD)**